

Public Consultation March 2022

ROADPLAN
CONSULTING



Funded by the Department of Rural and Community Development



The European Agricultural Fund
for Rural Development Europe
investing in rural areas



Centrales Cluiche Child Care Grant



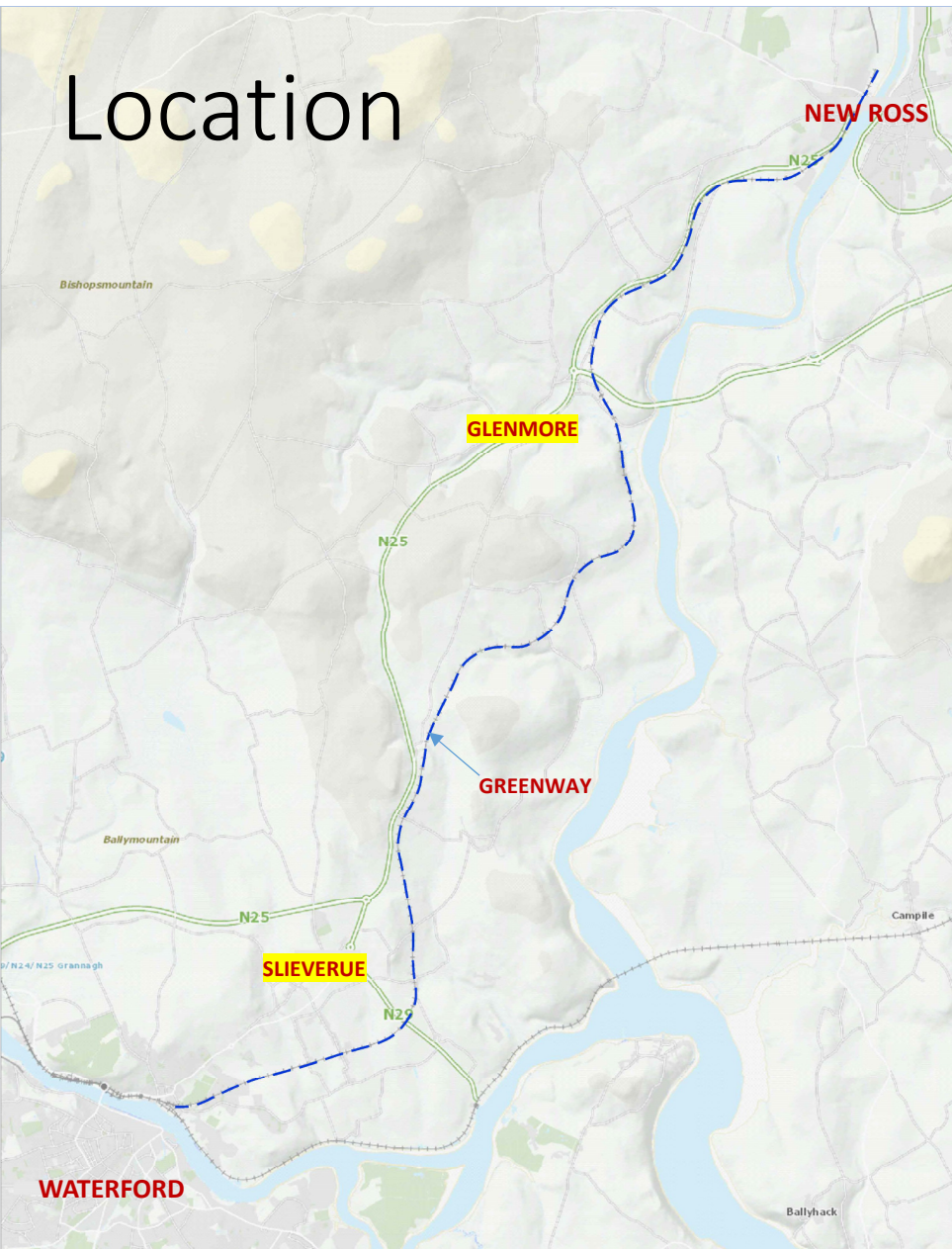
South East Greenway Links Glenmore and Slieverue *Slieverue section*

Kilkenny County Council, in association with Kilkenny LEADER Partnership and Trail Kilkenny intends to provide pedestrian and cyclist routes from the 24km long South East Greenway (under construction) to the villages of Glenmore and Slieverue, as part of an integrated network of Greenways and Blueways in the South East region.

Route options for these pedestrian and cycle paths been developed and assessed, and preferences are emerging. The aim of this public consultation is to obtain feedback on these route options to assist in the selection of a route for each village.



Location



Scheme Objectives

- Tourism – generate economic activity
- Community – provide amenities for wellbeing and health
- Transport – encourage modal shift by commuters

Route Characteristics

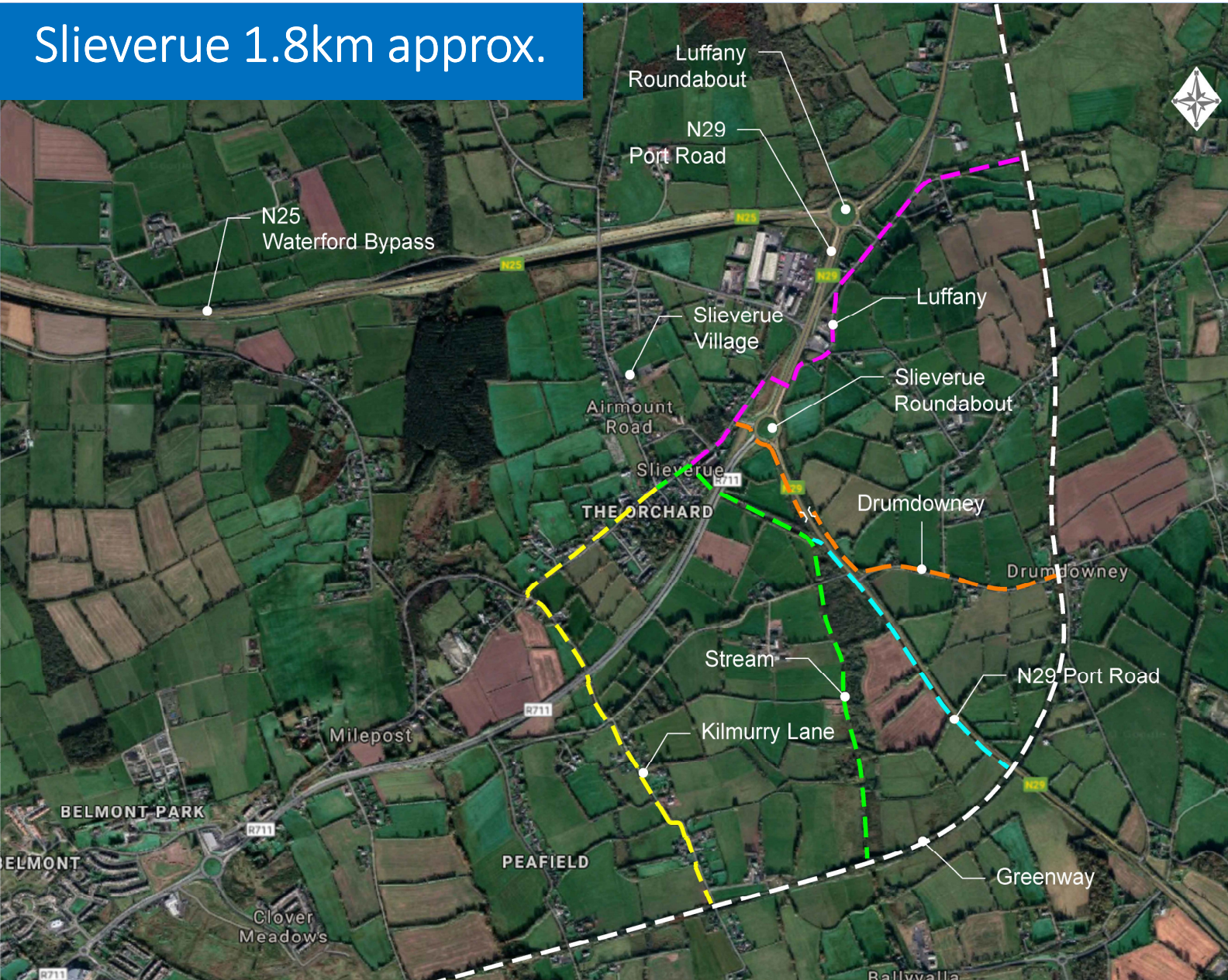
“Family-friendly for walking and cycling”

- Attractive – scenic and interesting
- Safe – away from heavy traffic but close to community
- Direct – short in length but induce diversion from greenway
- Comfortable – surfaced and not steep

To Date

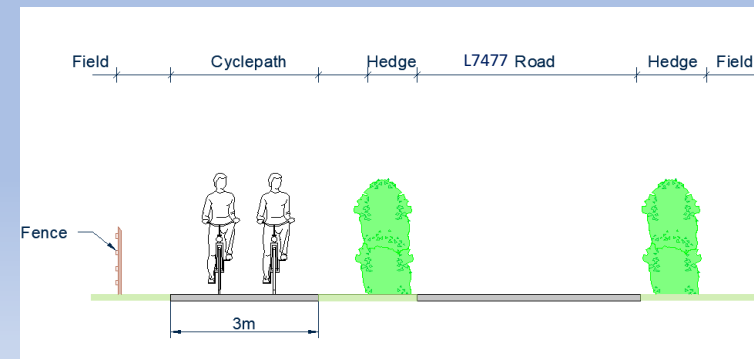
- Route options developed and assessed, and preferences are emerging.
- Discussions with landowners on the route options.
- Decision on preferred routes following public consultation.

Slieverue 1.8km approx.



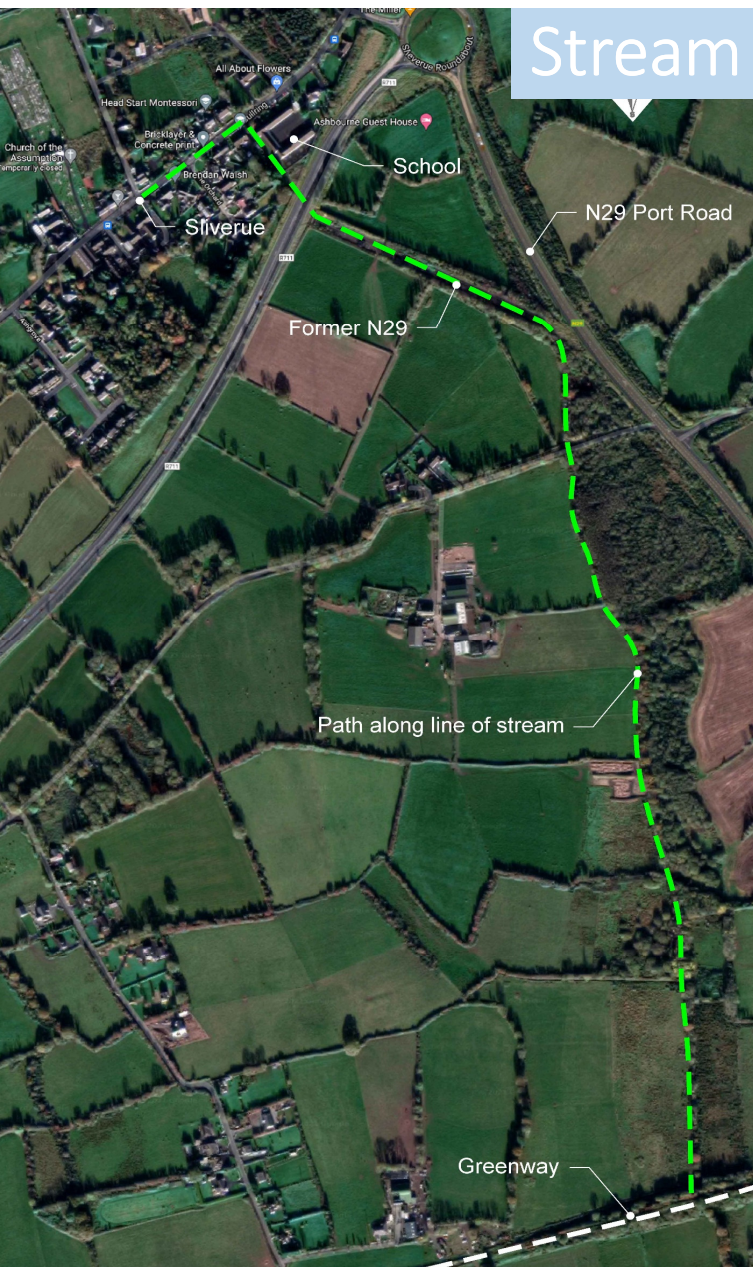
- Five Routes
 - Kilmurry (Yellow)
 - Stream (Green)
 - N29 Port Road (Cyan)
 - Drumdowney (Orange)
 - Luffany (Pink)
- Route to and from each end of the village provides a loop path, and is preferable to a single route
- No designated ecological site
- Archaeological monument at Kilmurry graveyard
- No designated architectural heritage sites
- Relatively flat – but level difference at railway
- N29 and R711 roads are significant severance lines

Kilmurry Lane



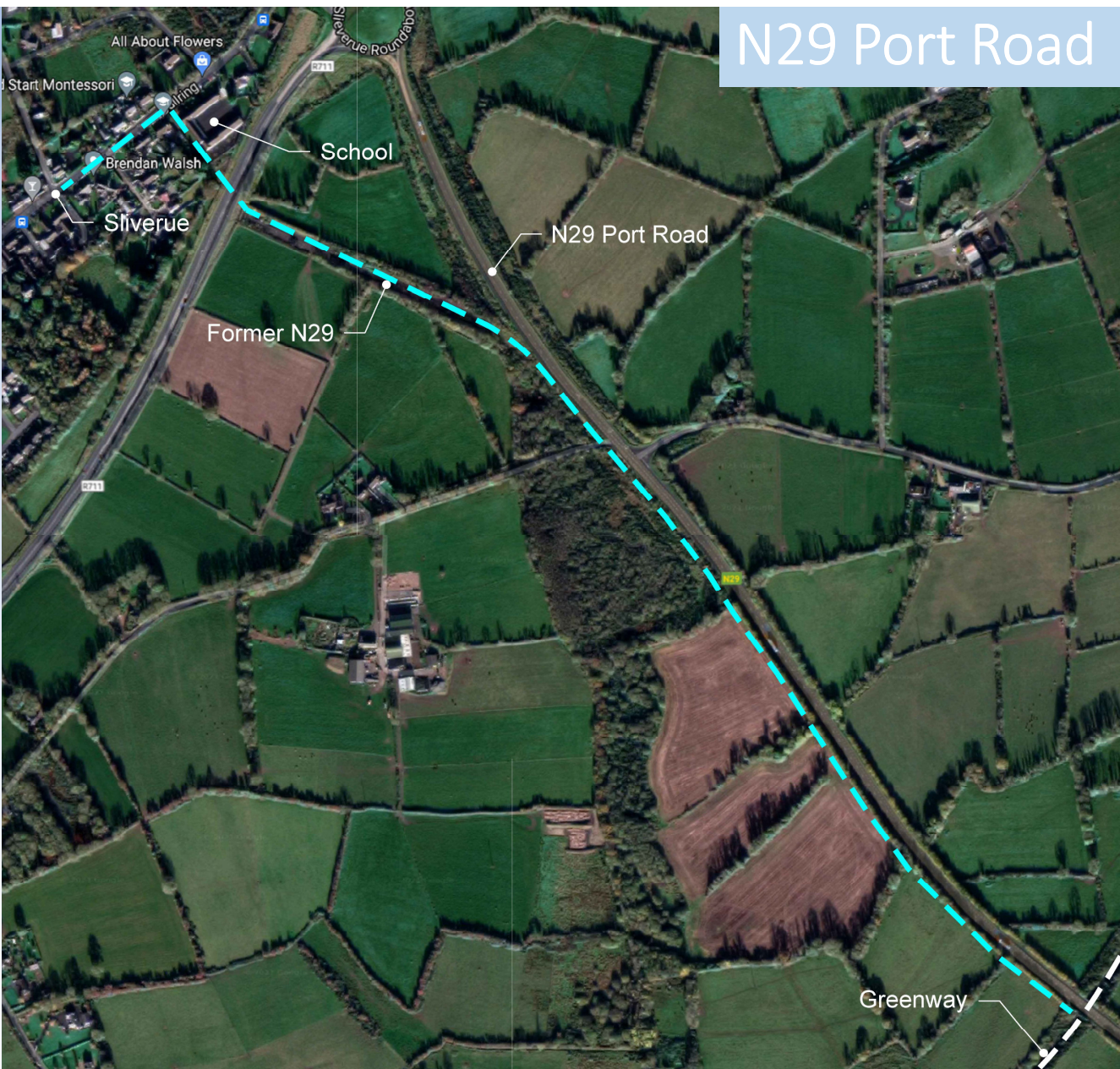
ADVANTAGES	DISADVANTAGES
Kilmurry Lane	
<ol style="list-style-type: none"> 1. Off-road route 2. Existing underpass of R711 3. Passive surveillance 4. Existing walking route 5. Shortest route for commute to Waterford City 6. Potential for loop route (in conjunction with Luffany) 	<ol style="list-style-type: none"> 1. Kilmurry graveyard site





ADVANTAGES	DISADVANTAGES
Stream Route	
<ol style="list-style-type: none"> 1. Along farm boundaries 2. Re-uses former N29 	<ol style="list-style-type: none"> 1. Potential impact on zoned lands close to the port 2. Not very attractive, and potentially less so if port lands developed 3. Personal safety concerns 4. At grade crossing R711 5. Level difference at connection





N29 Port Road



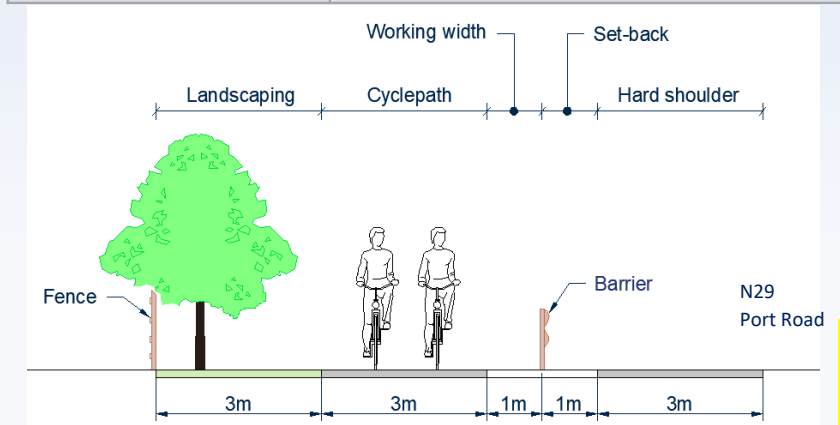
ADVANTAGES

DISADVANTAGES

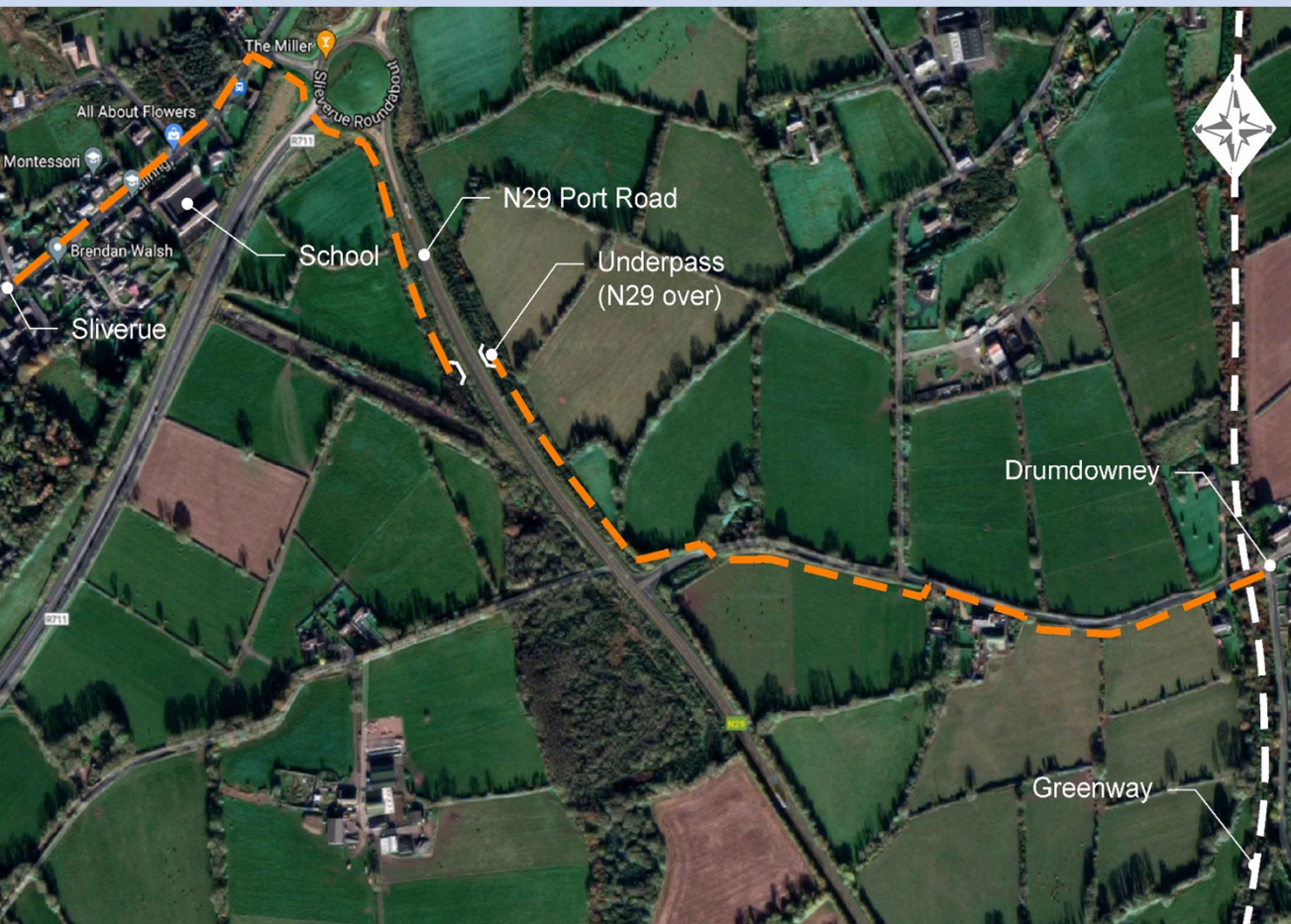
Port Road

1. Complements development within the port area
2. Re-uses former N29

1. Not attractive for family use – high traffic volumes - 30% HGVs
2. Zoned development land required.
3. At grade crossing R711
4. Level difference at railway connection



Drumdowney



ADVANTAGES	DISADVANTAGES
Drumdowney	
1. Short route	1. Underpass of N29 required. 2. Potential impact on zoned lands 3. Crossing of R711 4. Level difference at connection 5. Not attractive for family use – at toe of embankment of the Port Road

Luffany



ADVANTAGES	DISADVANTAGES
Luffany	
<ol style="list-style-type: none"> 1. Mainly on publicly-owned land 2. Remedies an existing issue with community severance and road safety, i.e. crossing of N29 at Luffany Roundabout 3. Potential for loop route in conjunction with Kilmurry 	<ol style="list-style-type: none"> 1. Footbridge required over N29 2. Located on the boundary of the TII PPP contract area.

The Luffany route combined with a connection to the Greenway at Kilmurry would be effective in meeting the objectives of the scheme.

HOW TO MAKE A SUBMISSION

Submissions must be in writing; verbal submissions will not be accepted. Submissions will be treated confidentially and in accordance with the Council's Data Retention Policy and relevant Data Protection Legislation.

Submissions should be made online, via e-mail to info@roadplan.ie or sent by post to the following address:
Roadplan Consulting, 7 Ormonde Road, Kilkenny. Submissions to be marked "*Glenmore & Slieverue links to SEG*".

The latest date for receipt of submissions is 4pm **Thursday 31st March 2022**.



Once this public consultation is complete the emerging preferred route for each village will be selected.

The further implementation of the project is subject to funding and the next stage would be the making of an application to the appropriate authority for consent for the scheme and the acquisition of the necessary lands.

The procedures governing the application would include statutory public consultation.